



LIVE THE ENCHANTING MOMENT



THE  
**PRIVACY**  
JATUJAK





# LOCATION

AN ENCHANTING  
DESTINATION FOR  
THE PERFECT  
GETAWAY TO  
COMPLETE YOUR  
LIVING EXPERIENCE.



All design used are for illustrative purposes only and are intended to convey the location for The Privacy Jatujak. They are for guidance only, do not necessarily represent a true scale and accurate depiction of the location.

# PROJECT OVERVIEW

PROJECT NAME :	THE PRIVACY JATUJAK
LAND AREA :	APPROXIMATELY 3 RAIS
PROJECT TYPE :	1 RESIDENTIAL BUILDING, 34 STOREYS
TOTAL UNITS :	832 UNITS + 3 SHOPS
UNIT TYPE :	1 BEDROOM 26.00 - 33.50 SQ.M. LOFT 30.00-31.00 + 18.00 SQ.M. 1 BEDROOM PLUS 35.80 - 36.60 SQ.M. 2 BEDROOM / 1 BATHROOM 44.10 - 45.00 SQ.M. 2 BEDROOM / 2 BATHROOM 53.00 SQ.M.
COMPLETION :	Q3, 2022
MAINTENANCE FEE :	55 THB/SQ.M./MONTH (1 YEAR PAYMENT IN ADVANCE)
SINKING FUND :	500 THB/SQ.M.





# SKY FACILITIES

All illustration pictures, materials, plans and specifications are artist's impressions which serve only as a guideline for general conceptual idea of the project. All details are subject to change without prior notice.





# LOBBY LOUNGE

All illustration pictures, materials, plans and specifications are artist's impressions which serve only as a guideline for general conceptual idea of the project. All details are subject to change without prior notice.





E-LIBRARY



SKY LOUNGE



WORKOUT SPACE



FITNESS ON DEMAND

All illustration pictures, materials, plans and specifications are artist's impressions which serve only as a guideline for general conceptual idea of the project. All details are subject to change without prior notice.



# FLOOR PLAN



This floor plan shows a 2-bedroom apartment. The living area features a sofa, a coffee table, and a television. The kitchen includes a sink, a stove, and a refrigerator. The bathroom has a toilet, a sink, and a bathtub. The bedrooms each have a bed and a dresser. The apartment is located on the 1st floor of a building.



This floor plan shows a 3-bedroom apartment. The layout includes a living area with a sofa and a coffee table, a kitchen with a sink and stove, and a bathroom with a toilet and shower. The bedrooms are furnished with beds and wardrobes. The apartment has a central hallway and a front entrance.







1 BED 26.00-33.00 SQ.M.

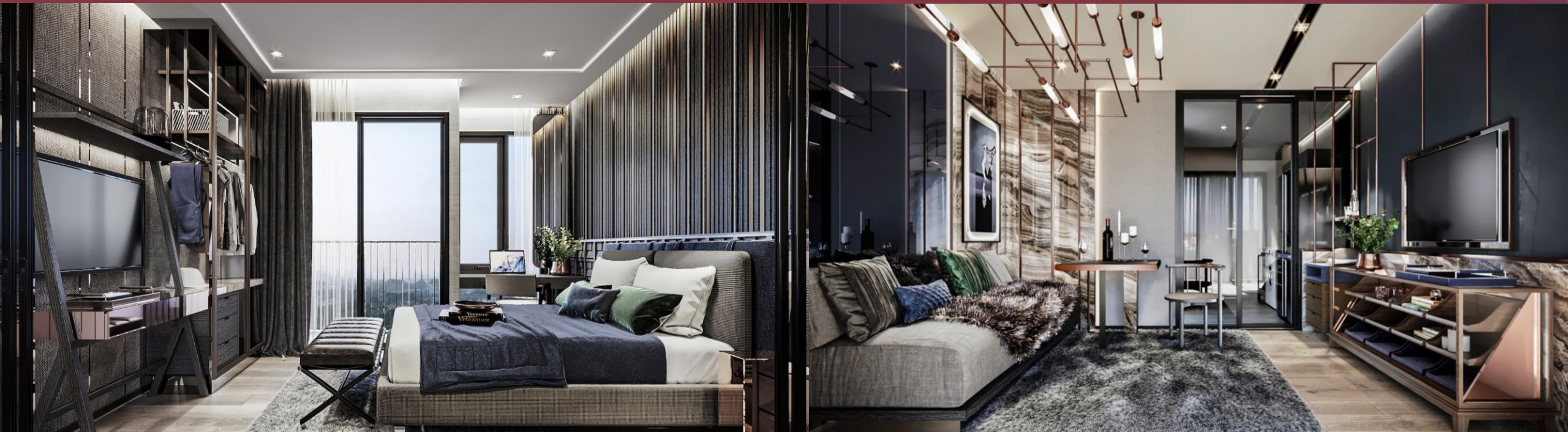




1 BED 26.00-33.00 SQ.M.



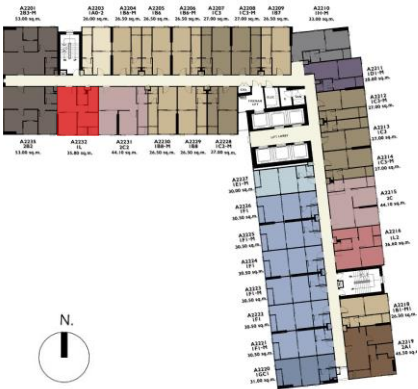
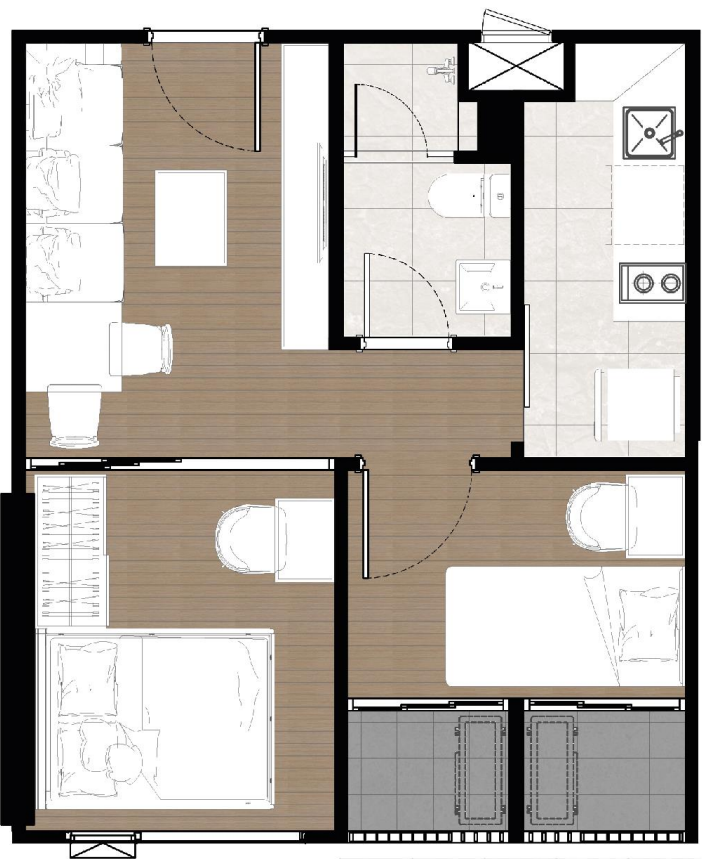
# 1 BED 30.00-31.00 SQ.M.



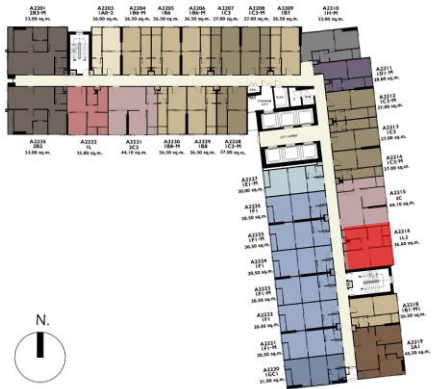
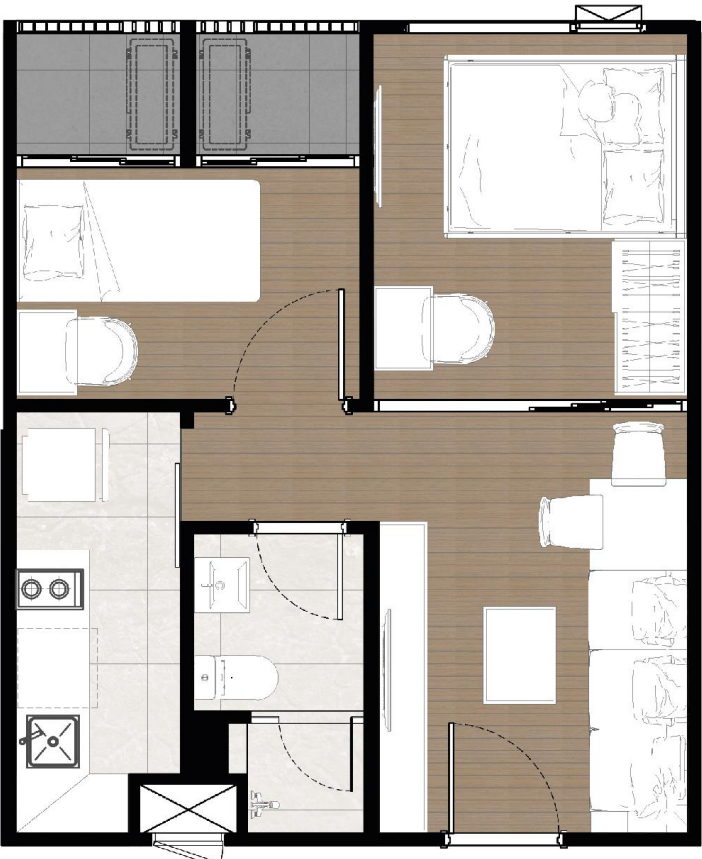
All illustration pictures, materials, plans and specifications are artist's impressions which serve only as a guideline for general conceptual idea of the project. All details are subject to change without prior notice.



IBED PLUS 35.80 SQ.M.

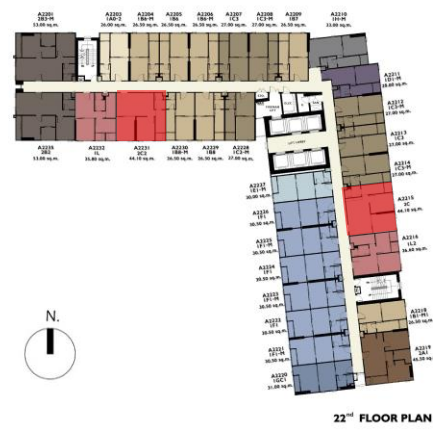


IBED PLUS 36.60 SQ.M

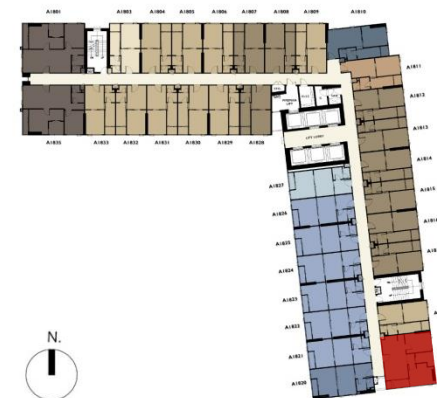




## 2BED 41.00 SQ.M.

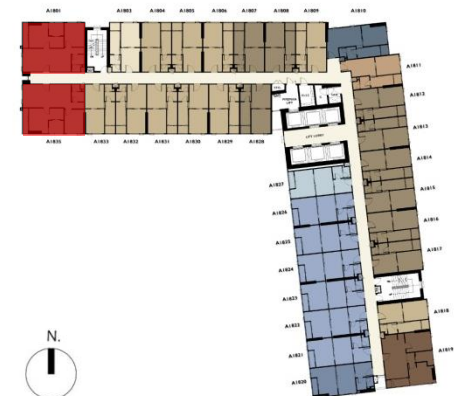


## 2BED 45.50 SQ.M.





## 2BED 53.00 SQ.M.





2BED 45.00, 53.00 SQ.M.





**THANK YOU**